

i-P65+ with Polycarbonate enclosure

Crompton

Self-contained luminaires



i-P65+

- LED safety luminaire with high ingress protection class (IP65) for both indoor and outdoor use
- Robust design (IK08) made from impact-resistant polycarbonate
- i-P65+ L: with wide-beam symmetrical lense with a near-square light distribution, i-P65+ L variant is suitable for illuminating large areas (Spacing in both direction up to 22 m for E= 1lx) and mounting heights up to 18 m (for 1 h rated operating time)
- i-P65+ H: With narrow-beam reflector technology, the i-P65+ H variant is especially suitable for escape route lighting with high spacing up to 29 m and mounting heights up to 21 m (for 1 h rated operating time)
- High lumen output ensures additional suitability for increased illumination levels such as min. 15 lx for high risk task areas or applications with 10.8 lx acc. to NFPA 101
- With provisions for M20 cable entries on enclosures sides (3 x lateral and 1 x at each end side) and BESA entry on rear
- Minimum maintenance effort and increased safety via use of LEDs with high service life (up to 60,000 h)
- Suitable for non-maintained and maintained operation

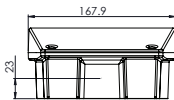
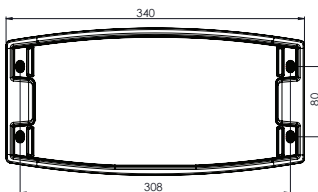
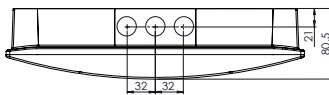
i-P65+ L variant



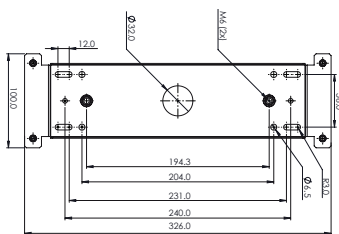
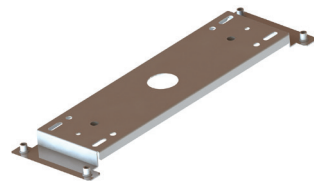
i-P65+ H variant



Dimensions in mm



Mounting bracket



Function	L variants = Anti Panic, Escape Route	H variants = Escape Route
Testing system	Addressable (CGLine+)	
Housing	Polycarbonate, Glow wire test : 850°C, RAL9016	
Type of mounting	Surface ceiling	
Terminals	Plug-in Terminals - 0.5 - 2.5 mm ²	
Operation Mode	Maintained & Non Maintained mode selectable	
Connection voltage	230-240V - 50/60 Hz	
Permissible ambient temperature	+5°C to +40°C	
Battery	Ni-Cd	
Light source	COB LED 6.5W	
Insulation class	I	
Dimensions in mm	340 x 168 x 80.5	
Weight (kg)	1.75	

Ordering details

Order code	Monitoring	Optics	Duration	Lum in emergency mode	Lum in mains mode	Consumption				Battery	
						Non Maintained mode	Maintained mode				
iP65PLP3HCGLC	CGLine+	Lens (L)	3h	510	900	4.4 VA	3.2 W	21.7 VA	10.7 W	4.8 V	4 Ah
iP65PHP3HCGLC		Reflector (H)	3h	380	690	4.4 VA	3.2 W	21.7 VA	10.7 W	4.8 V	4 Ah

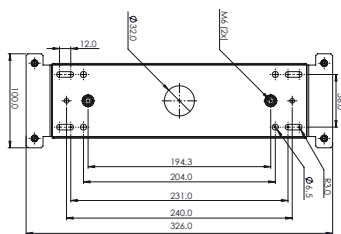
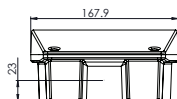
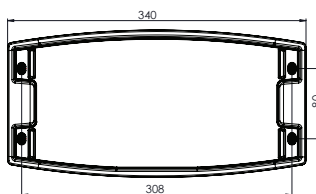
One M20 cable gland included

Accessories

Order code	Scope of supply
IP65PSUSPB	Mounting bracket for chain suspension or for mounting at trunking systems or similar

Crompton

- LED safety luminaire with high ingress protection class (IP65) for both indoor and outdoor use
- Robust design (IK08) made from aluminium die-cast and impact-resistant polycarbonate
- i-P65+ L: with wide-beam symmetrical lense with a near-square light distribution, i-P65+ L variant is suitable for illuminating large areas (Spacing in both direction up to 22 m for E= 1lx) and mounting heights up to 18 m (for 1 h rated operating time)
- i-P65+ H: With narrow-beam reflector technology, the i-P65+ H variant is especially suitable for escape route lighting with high spacing up to 29 m and mounting heights up to 21 m (for 1 h rated operating time)
- High lumen output ensures additional suitability for increased illumination levels such as min. 15 lx for high risk task areas or applications with 10.8 lx acc. to NFPA 101
- With provisions for M20 cable entries on enclosures sides (3 x lateral and 1 x at each end side) and BESA entry on rear
- Minimum maintenance effort and increased safety via use of LEDs with high service life (up to 60,000 h)
- Suitable for non-maintained and maintained operation



Function	L variants = Anti Panic, Escape Route	H variants = Escape Route
Testing system	CGLine+	
Housing	Aluminium, Polycarbonate, Glow wire test : 850°C, RAL9016	
Type of mounting	Surface ceiling	
Terminals	Plug-in Terminals - 0.5 - 2.5 mm²	
Operation Mode	Maintained & Non Maintained mode selectable	
Connection voltage	230-240V - 50/60 Hz	
Permissible ambient temperature	+5°C to +40°C	
Battery	Ni-Cd	
Light source	COB LED 6.5W	
Insulation class	I	
Dimensions in mm	340 x 168 x 80.5	
Weight (kg)	2.25	

Order code	Monitoring	Optics	Duration	Lum in emergency mode	Lum in mains mode	Consumption					
						Non Maintained mode		Maintained mode		Battery	
iP65PLA3HCGLC	CGLine+	Lens (L)	3h	510	900	4.4 VA	3.2 W	21.7 VA	10.7 W	4.8 V	4 Ah
iP65PHA3HCGLC		Reflector (H)	3h	380	690	4.4 VA	3.2 W	21.7 VA	10.7 W	4.8 V	4 Ah

One M20 cable gland included

Order code	Scope of supply
IP65PSUSPB	Mounting bracket for chain suspension or for mounting at trunking systems or similar